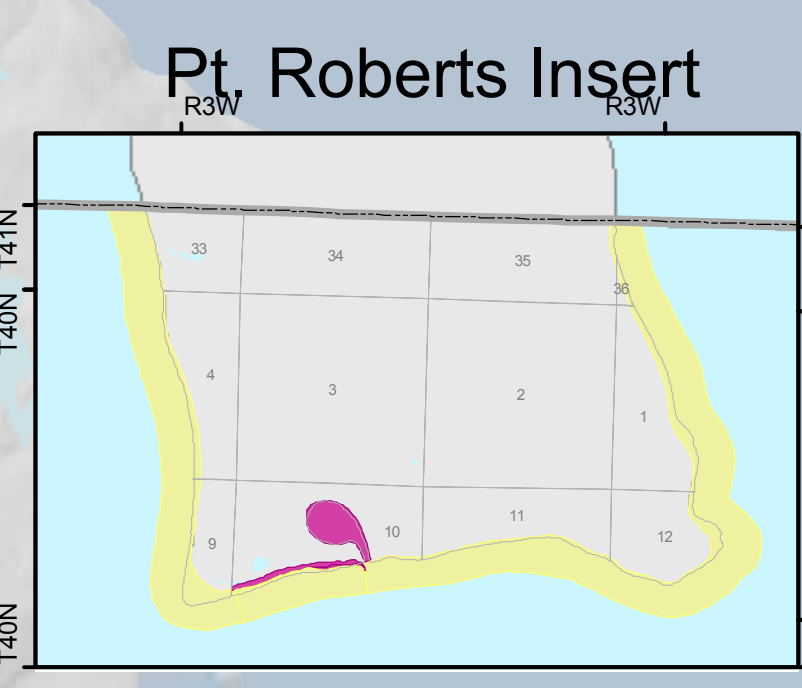
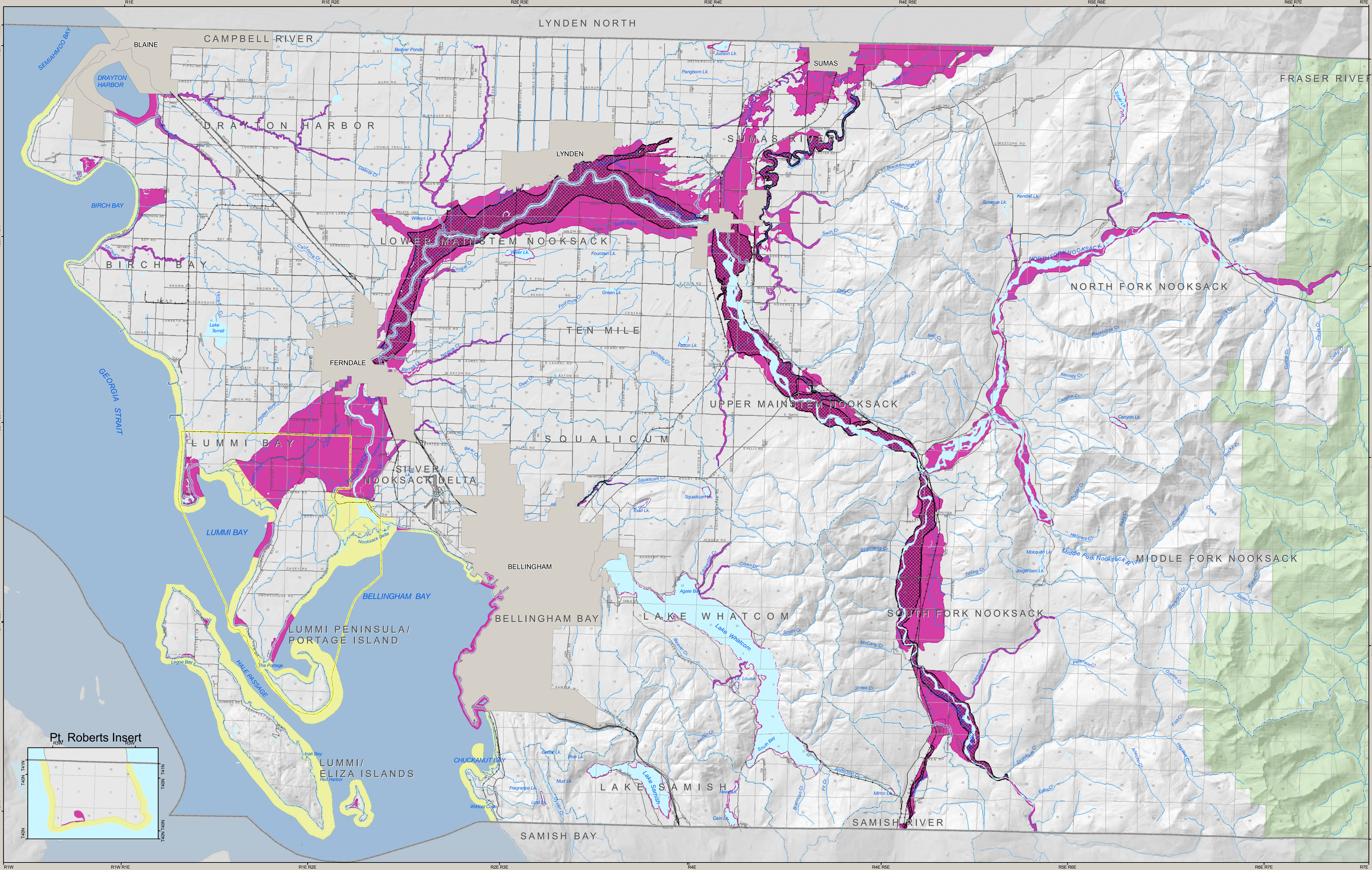


WHATCOM COUNTY CRITICAL AREAS ORDINANCE - FREQUENTLY FLOODED AREAS



Article IV - Frequently Flooded Areas

FREQUENTLY FLOODED

- Area inundated by 100 year flooding
- Velocity Hazard in 100 year flooding
- City Boundaries
- Section Lines
- Mt. Baker/Snoqualmie National Forest
- Lummi Nation Boundaries
- Floodway
- Watershed Management Areas

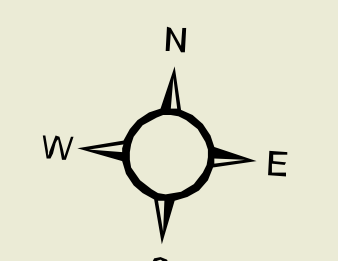
area that must be reserved in order to discharge the base flood without cumulatively increasing the water-surface elevation by more than a designated height.

The information depicted on this map is to be used with Title 16:16:400 - The Whatcom County Critical Areas Ordinance, effective September 30, 2005.

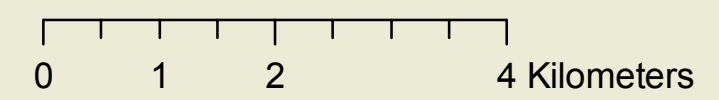
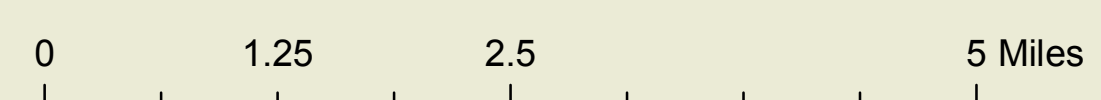
Frequently flooded areas (FFA) are areas located along major rivers, streams, and coastal areas where the depth, velocity, intensity and frequency of flood water during major events presents a risk to human life property. FFA's are subject to a one percent recurrence interval of flood water inundation or a 100 year base flood as mapped by the Federal Emergency Management Agency's Flood Insurance Rate Maps (FIRM) as amended for Whatcom County. This includes coastal high hazard areas as defined by this chapter and as identified and designated on the FIRM maps as Zone A, AE, AO, VE or V.

The floodway areas depicted are designated by FEMA to provide an area that must be reserved in order to discharge the base flood without cumulatively increasing the surface water elevation more than one (1) foot. Also known as the "zero rise floodway." The floodplain as well as the floodway comes from the 2004 FIRM dataset.

This map was produced from data maintained in the Whatcom County Planning & Development Services Geographic Information System (GIS). For further information regarding maps, data sources, or the availability of GIS products and services, please contact Planning & Development Services at 360-676-6907 or pdl@co.whatcom.wa.us.



Scale 1:65,000



Projection - Lambert Conformal Conic, NAD 1983

Whatcom County Critical Areas Ordinance



P. Gil February 2006



USE OF WHATCOM COUNTY'S GIS DATA INCLUDES THE USER'S AGREEMENT WITH THE FOLLOWING STATEMENT:
 Whatcom County guarantees the accuracy of the information on this map for the purposes of planning, zoning, and development. The user assumes all responsibility for any use of the map, including but not limited to, liability arising from any use of this map.